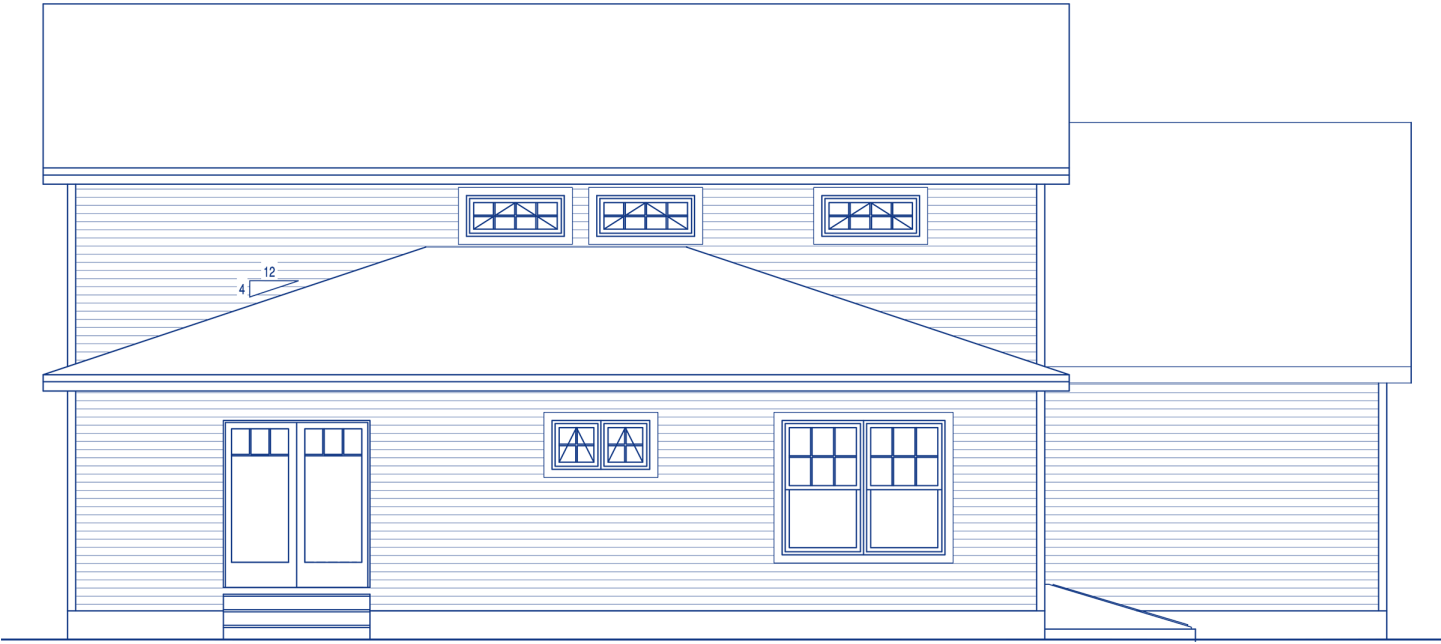


**The Frank (2289 sq ft) – Front**



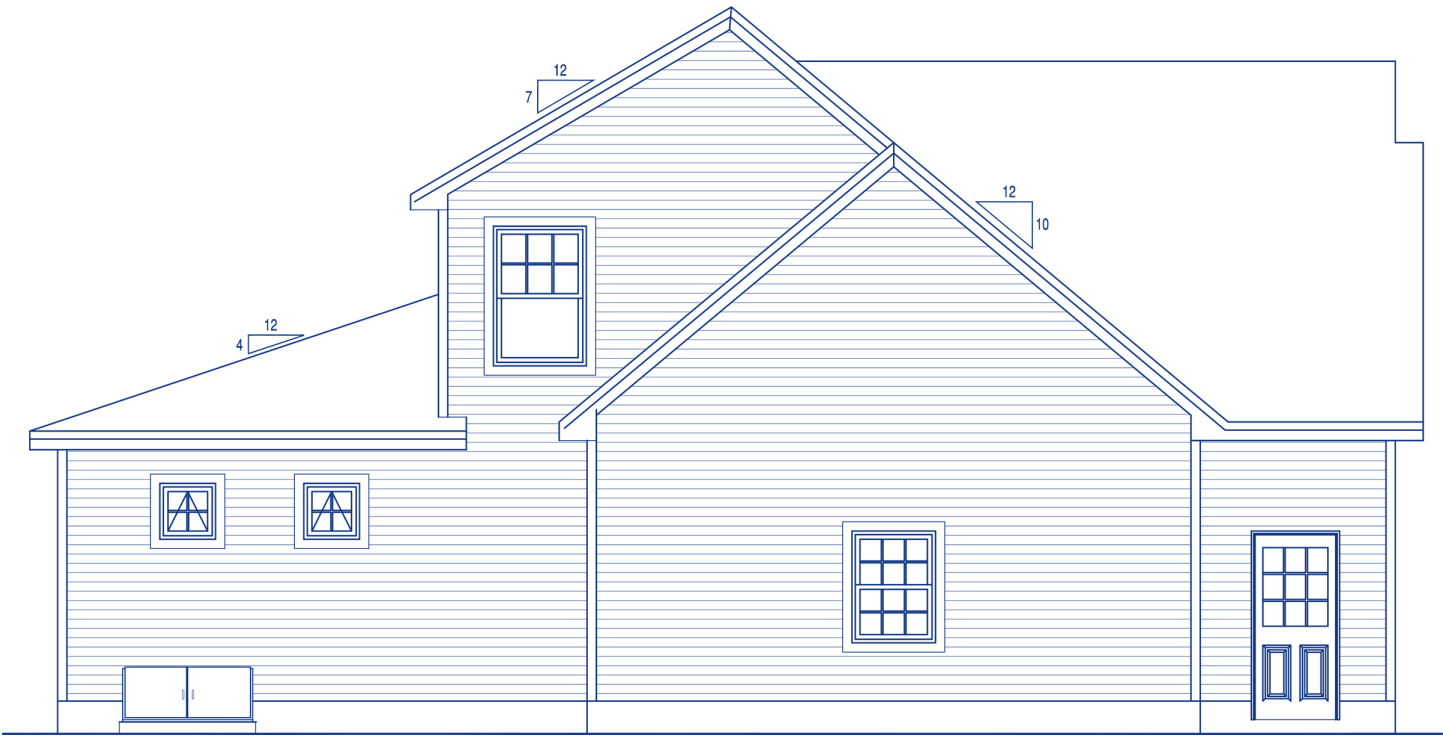


**The Frank – Rear**





**The Frank – Left**





**The Frank – Right**

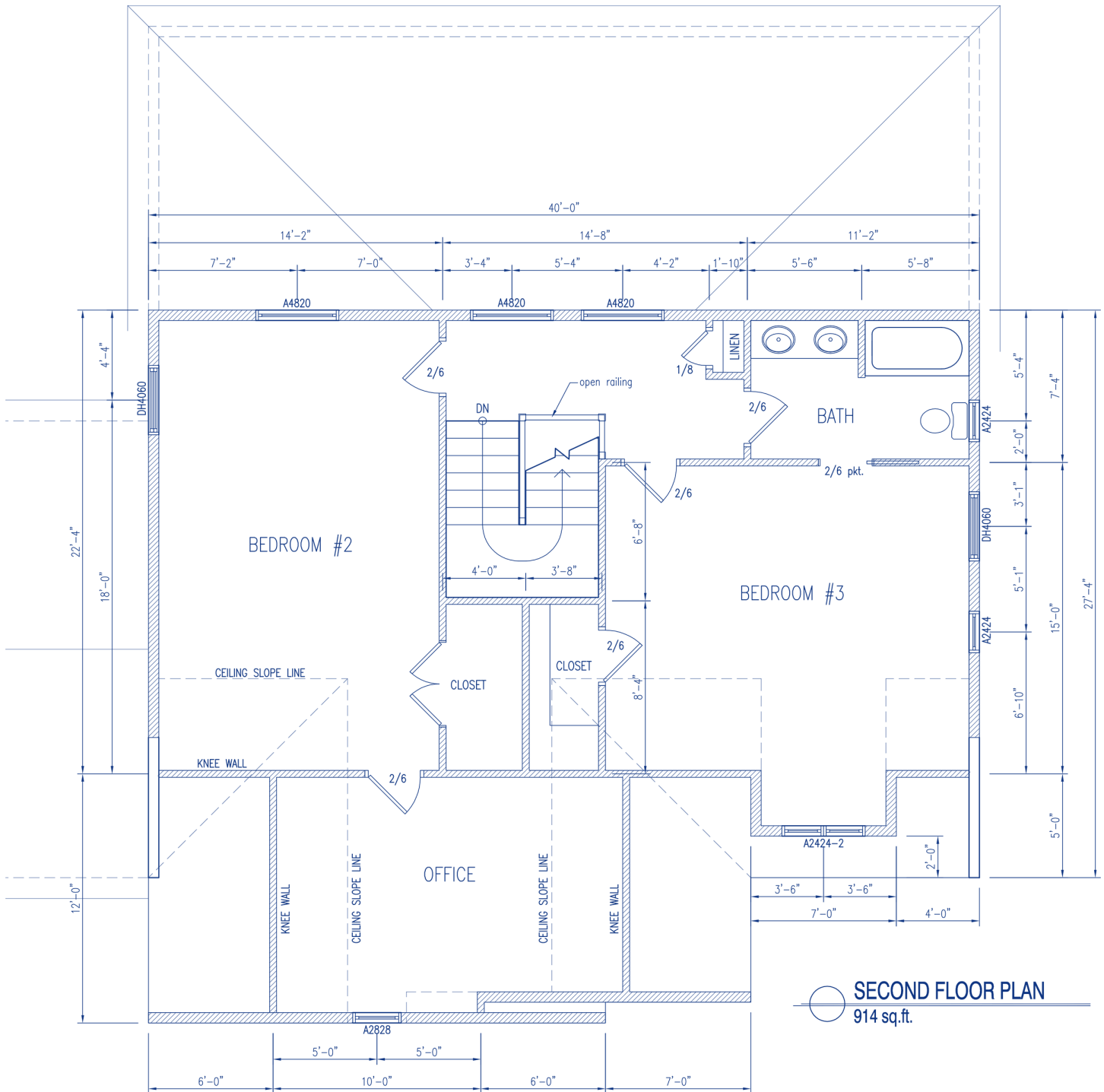




[illegible]



## The Frank – Second Floor Plan

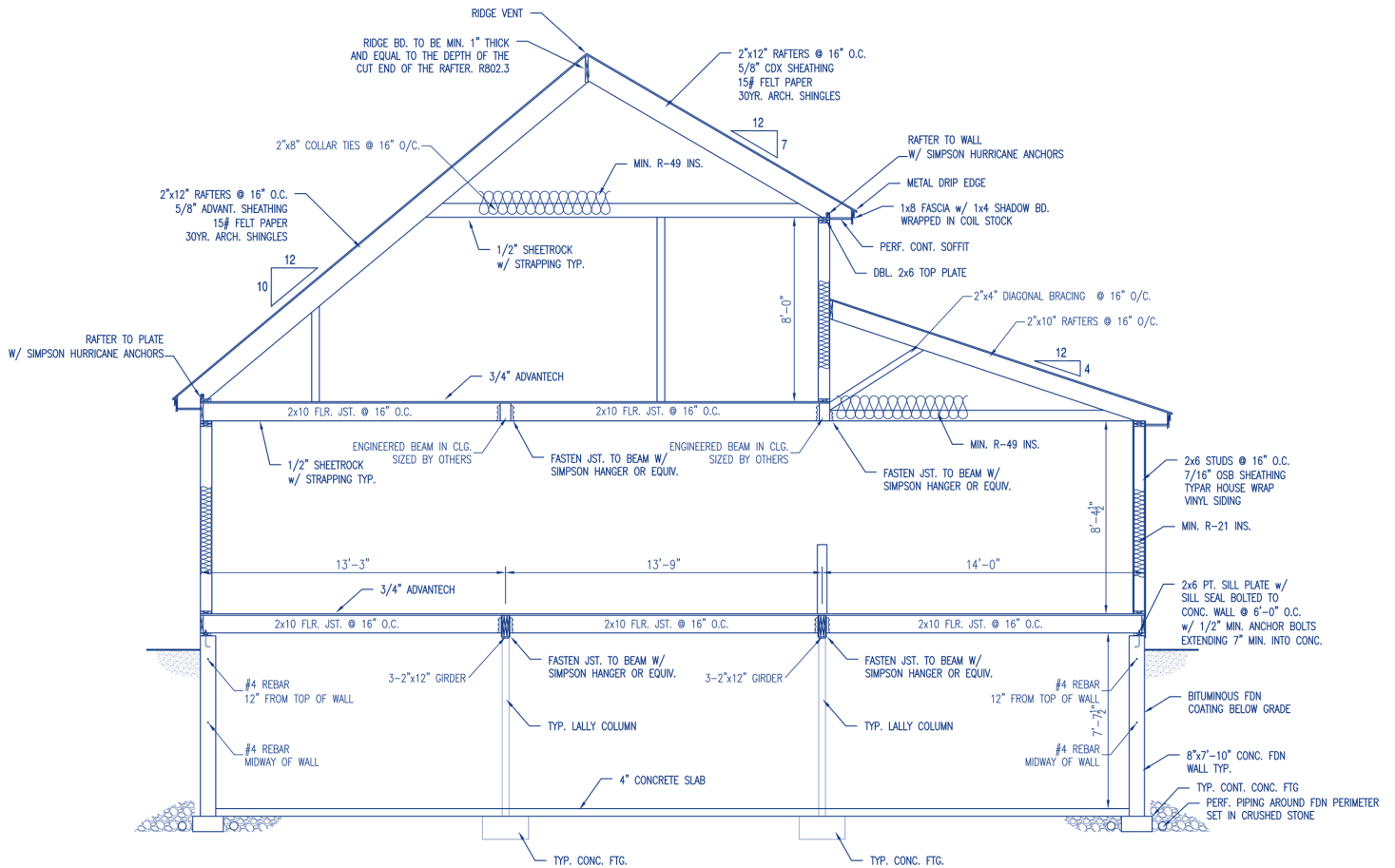




Architectural floor plan of a basement showing foundation, walls, and structural elements. The plan includes a 10'x10' patio area at the top right. The main structure is a rectangular room with a 19'-0" x 22'-0" footprint. The walls are 8" concrete frost wall minimum, 4' below grade with typical concrete footing. The floor is 4" reinforced concrete slab, 8" below top of concrete wall, with concrete slab to be over compacted gravel and sloped 1/8" per 1'-0" toward outside horizontal dimension (O.H.D.). The plan shows various structural details including 2"x10" floor joists at 16" on center (O.C.) with bridging, 3-2"x12" girders, and 2-2"x10" beams. There are also 8"x7'-10" concrete walls with typical concrete footing. The plan includes dimensions for walls, floors, and structural elements, as well as notes for construction details such as 'DROP T.O.W. FOR BULKHEAD DR.' and 'DROP TOP OF CONC. WALL FOR DOOR'. The plan also shows a 10'x10' patio area at the top right.



## The Frank – Cross-section





## **Kitchen – Perspective 1**





## Kitchen – Perspective 2





**Kitchen – Perspective 3**



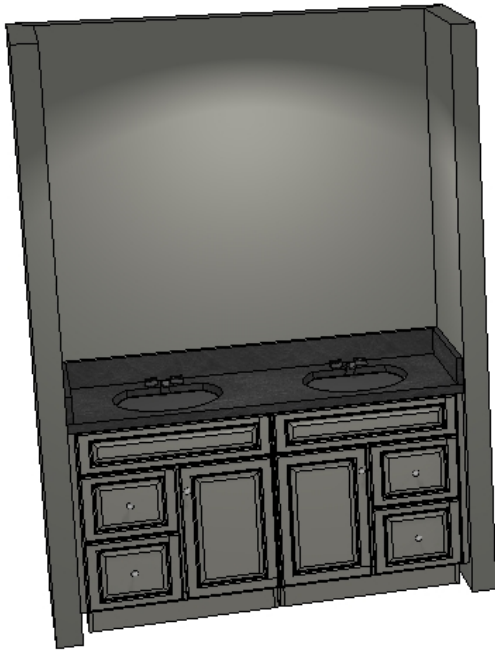


## **Kitchen – Perspective 4**



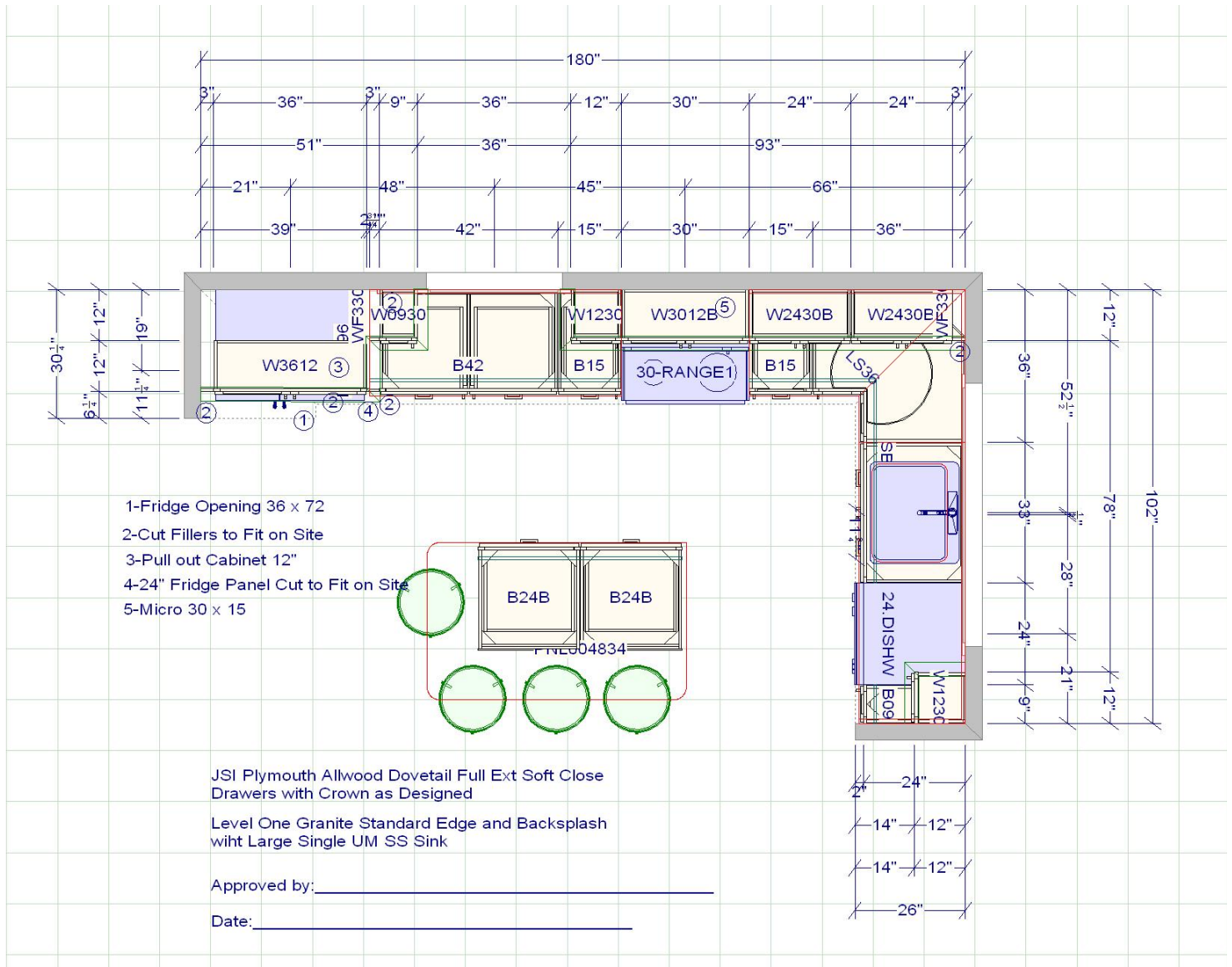


## **Vanities**



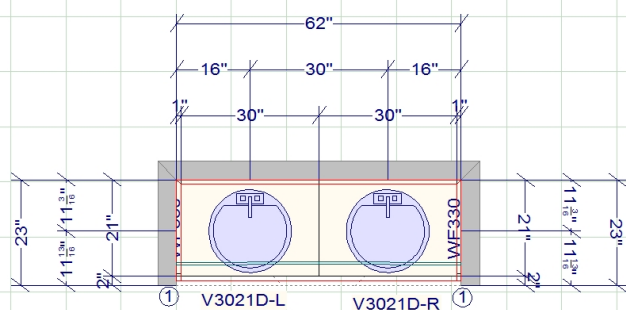


## Kitchen Plan

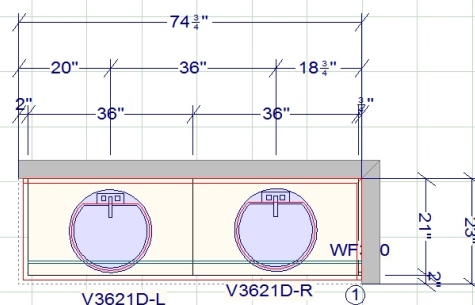




## Vanity Plans



Guest



Master

JSI Plymouth Allwood Dovetail Drawers with 3/4" Ext  
Side Mount Glides No Crown

1-Cut Fillers to Fit on Site

Level One Granite Standard Edge and Backsplash with  
White UM Sinks

Approved by: \_\_\_\_\_

Date: \_\_\_\_\_