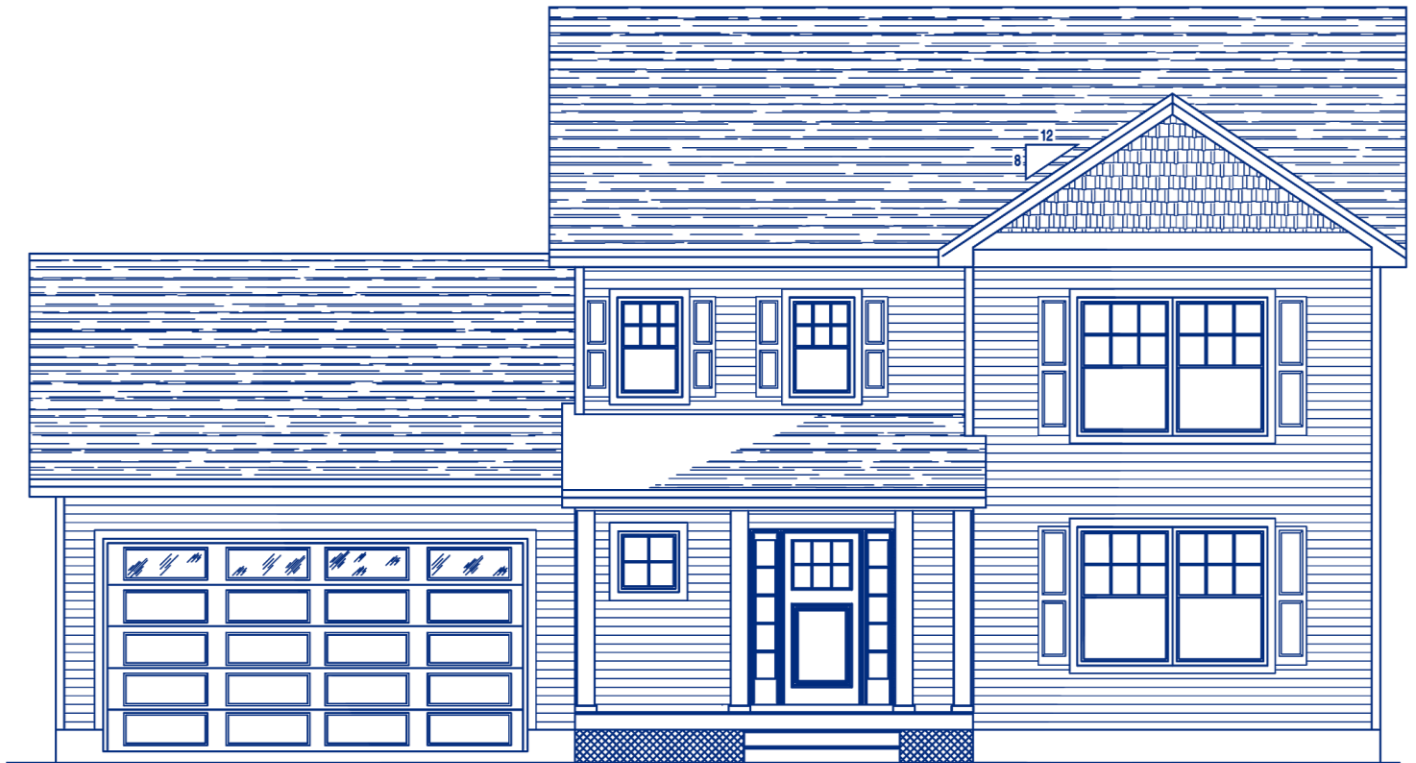
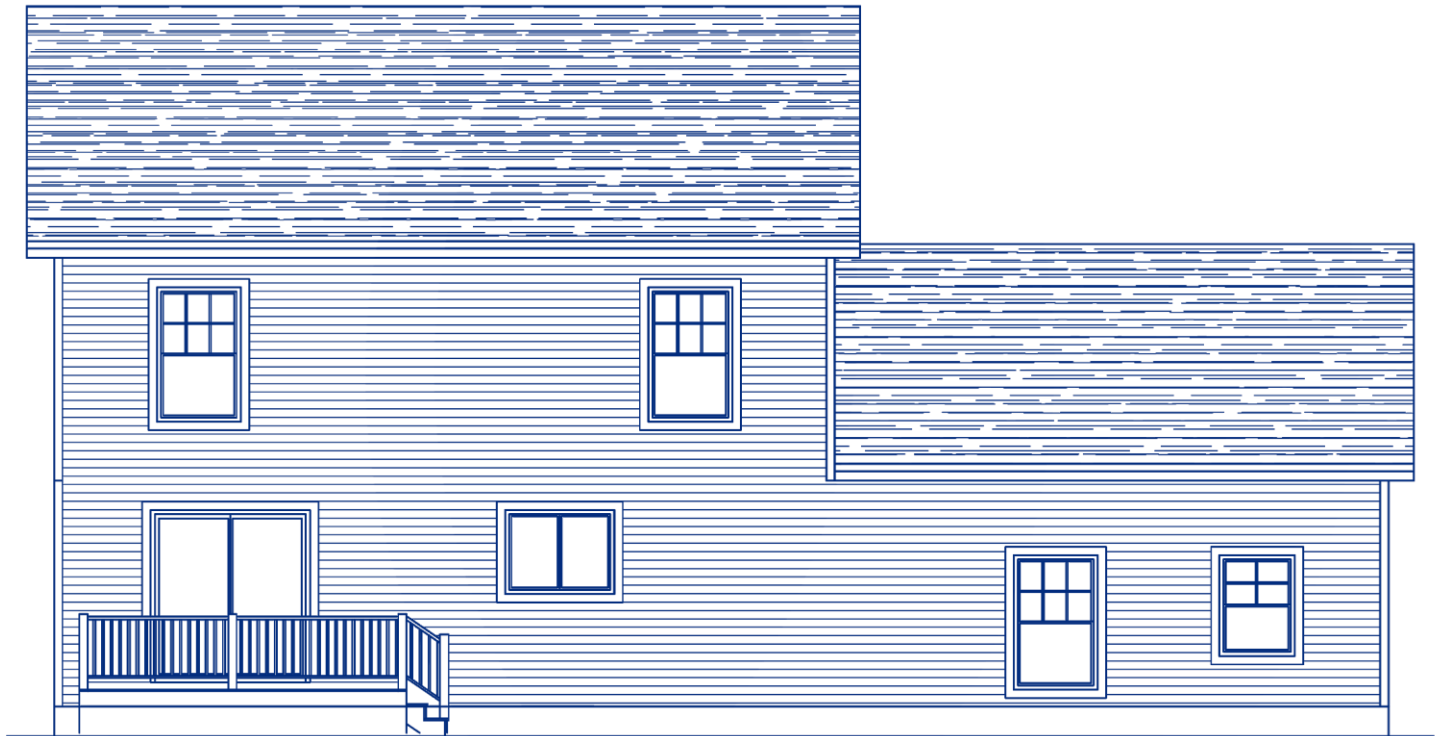


**Holly (1422 Sq ft) – Front**



**Holly – Rear**



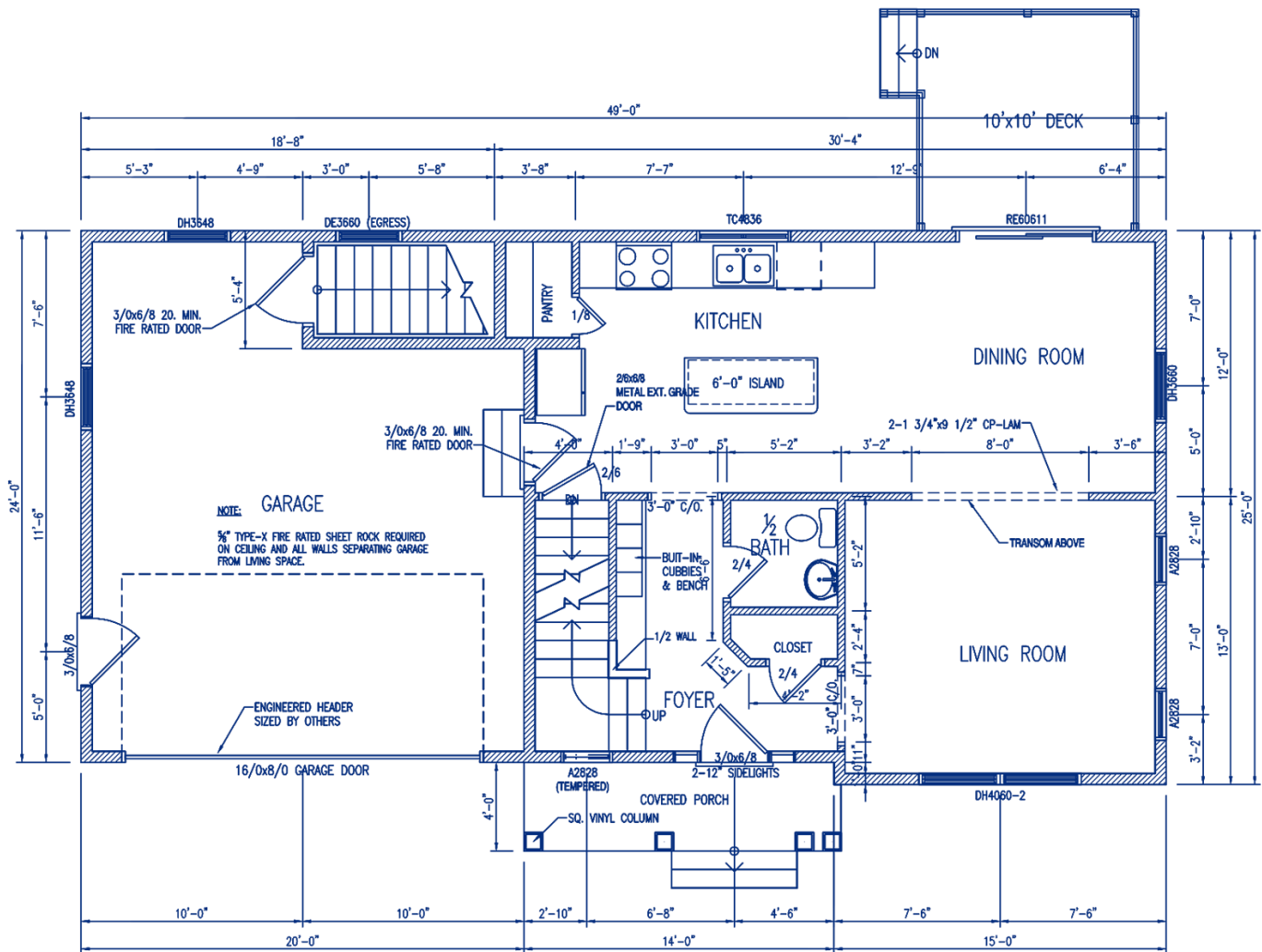
**Holly – Left**



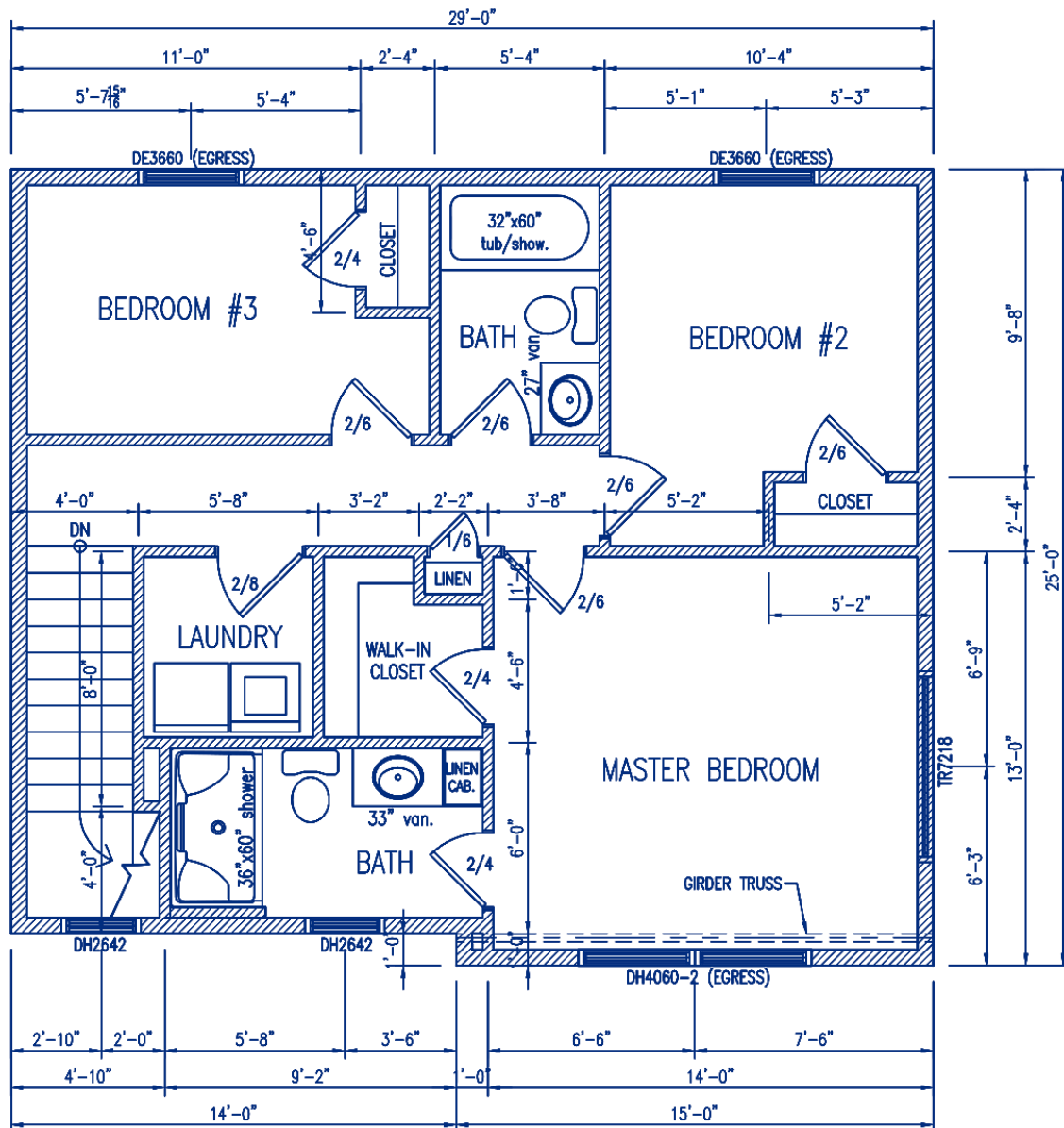
**Holly – Right**



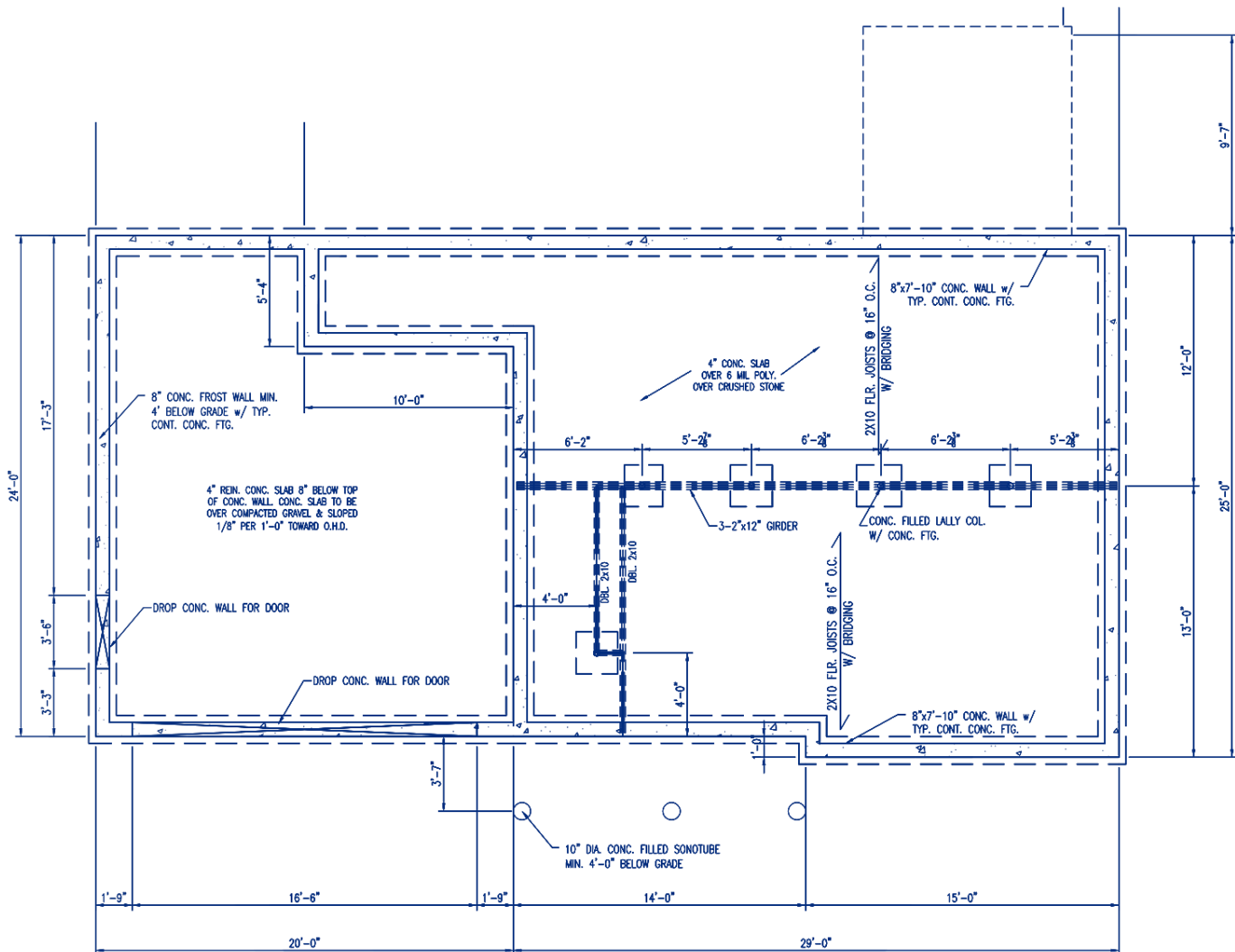
## Holly – First Floor Plan



## Holly – Second Floor Plan



## Holly – First Floor Plan



**Kitchen – Perspective 1**





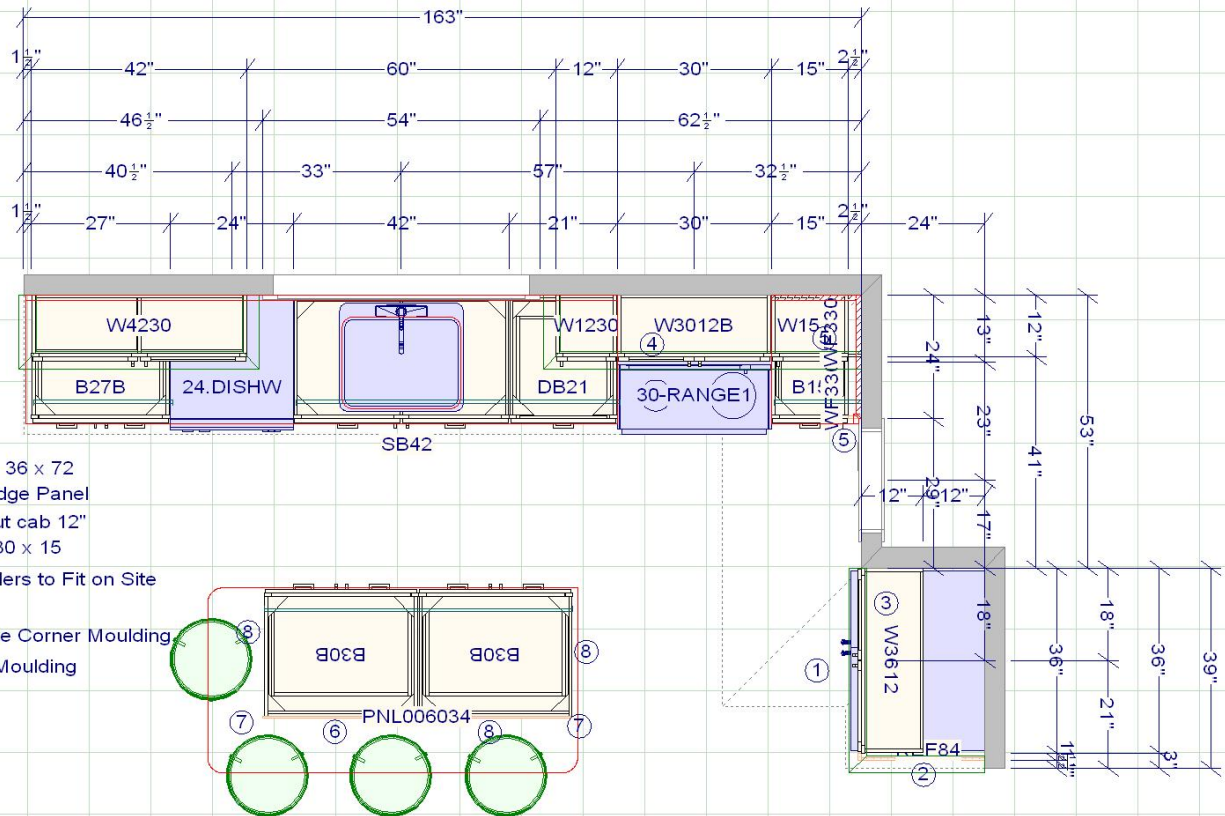
## **Kitchen – Perspective 2**



## **Kitchen – Perspective 3**



## Kitchen Plan



- 1-Fridge 36 x 72
- 2-24" Fridge Panel
- 3-Pull out cab 12"
- 4-Micro 30 x 15
- 5-Cut Fillers to Fit on Site
- 6-Panel
- 7-Outside Corner Moulding
- 8-Shoe Moulding

JSI Plymouth Allwood Dovetail Full Ext Soft Close Drawers  
with Crown as Designed

Level One Granite Standard Edge and Backspalsh with  
Large Single UM SS Sink

Approved by: \_\_\_\_\_

Date: \_\_\_\_\_

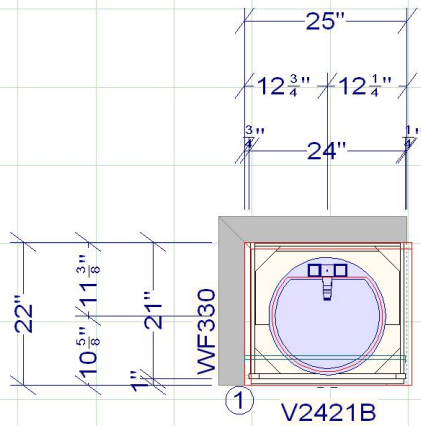
**Master Vanity**



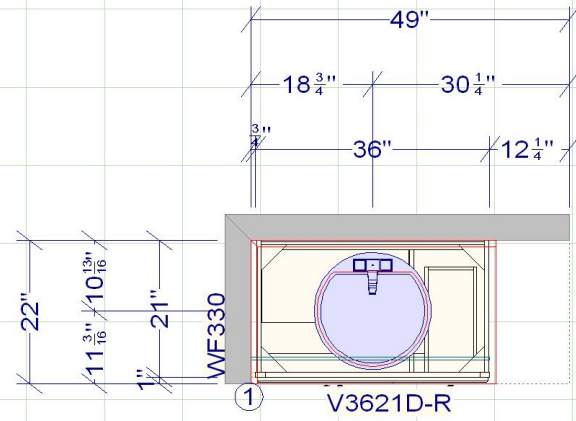
**Guest Vanity**



## Vanity Plan



Guest



Master

JSI Plymouth Allwood Dovetail Drawers 3/4 Ext Side  
Mount Glides as Designed

1-Cut Filler to Fit on Site

Level One Granite Standard Edge and Backsplash with  
White UM Sinks

Approved by: \_\_\_\_\_

Date: \_\_\_\_\_